

LEGEND

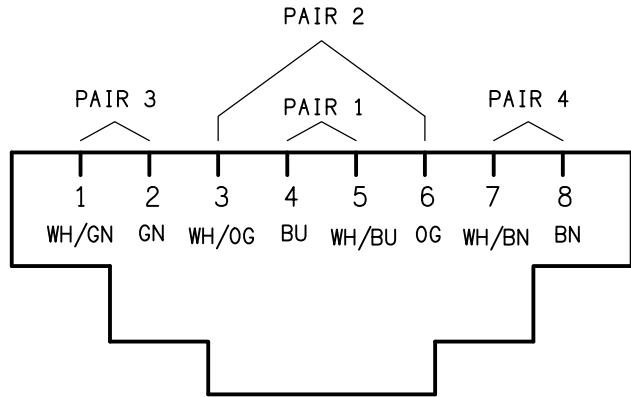
	ELECTRICAL SERVICES SWITCHBOARD.
	SWITCHBOARD / CONTROL PANEL NOT PROVIDED AS PART OF THE ELECTRICAL SUBCONTRACT.
	SINGLE POWER OUTLET.
	DOUBLE POWER OUTLET.
	DOUBLE POWER OUTLET C/W INTEGRAL USB CHARGERS.
	SPECIAL PURPOSE POWER OUTLET.
	SIGN OUTLET / CONNECTION.
	SINGLE PHASE ISOLATOR.
	THREE PHASE ISOLATOR.
	JUNCTION BOX.
	CONDUIT ROUTE.
	ELECTRICAL FLOOR BOX, TYPE AS NOTED.
	LIGHTING CONTROL SWITCH PANEL, TYPE x.
	ONE-WAY LIGHT SWITCH.
	CIRCUIT LINE.
	SWITCH LINE.
	POWER CIRCUIT DESIGNATION. DENOTES DB AND CIRCUIT.
	LIGHTING CONTROL CHANNEL REFERENCE.
	ELECTRICAL EQUIPMENT AS NOTED.
	RJ45 CAT-6 COMMUNICATIONS OUTLET.
	NBN NETWORK TERMINATION DEVICE.
	NBN PREMISES CONNECTION DEVICE.
	ELECTRIC VEHICLE CHARGER, TYPE x.
	ELECTRIC VEHICLE CHARGER ISOLATION SWITCH.
	METER TYPE x.
	CIRCUIT BREAKER C/W SHUNT TRIP.
	FUSE.
	SINGLE PHASE.
	THREE PHASE.
	CURRENT TRANSFORMER C/W REMOVABLE LINK.
	FUSE LINK.
	COMBINED FUSE SWITCH.
	CIRCUIT BREAKER.
	ISOLATOR.
	RESIDUAL CURRENT DEVICE.
	CONTACTOR - NORMALLY OPEN.
	CONTACTOR - NORMALLY CLOSED.
	REFER TO DETAIL NOTED FOR THE AREA SHOWN HATCHED. ADDITIONAL OUTLETS & FITTINGS MAY BE SHOWN ON DETAIL.

LEGEND

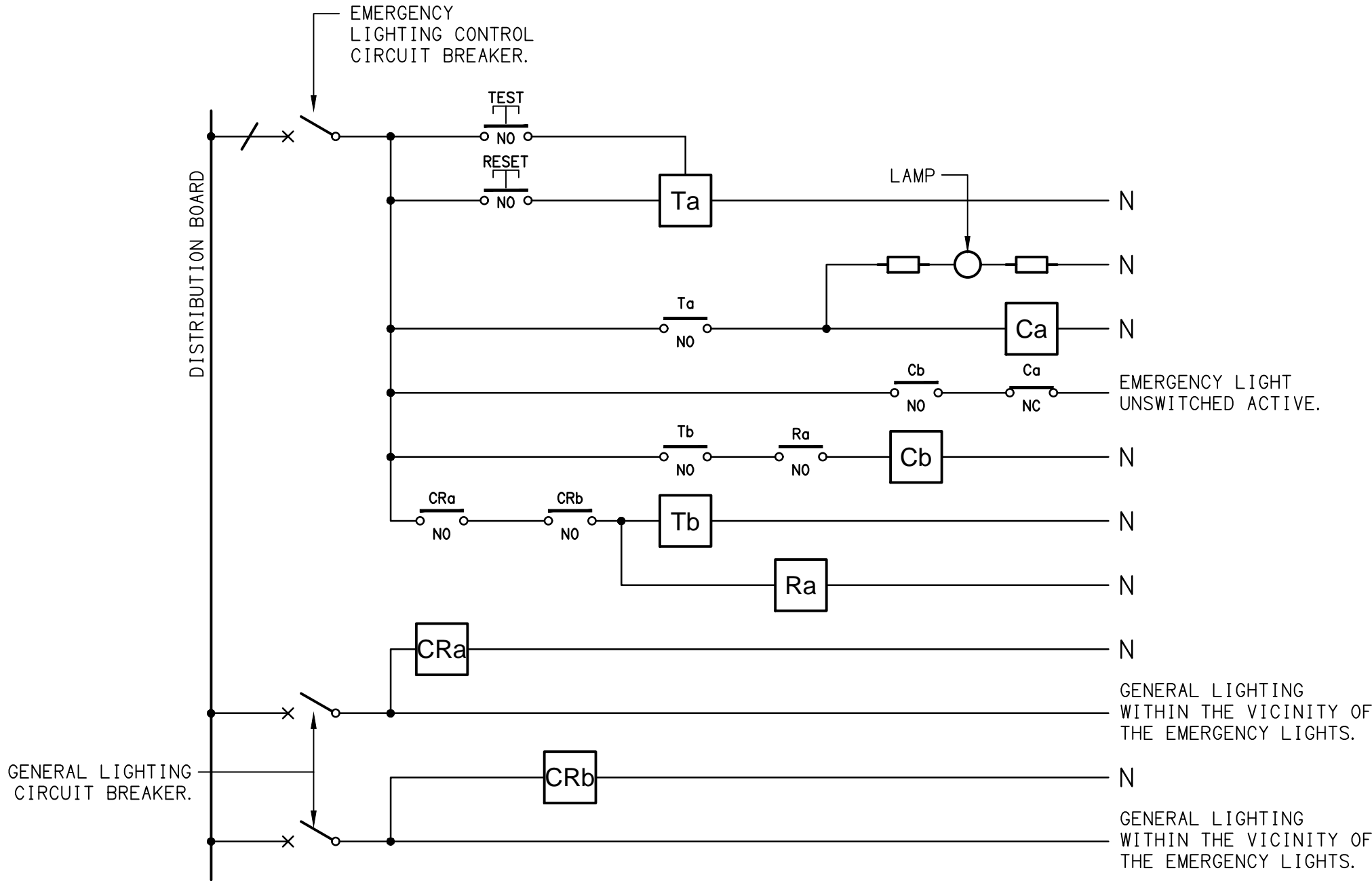
E1	E1: GENERAL LED EMERGENCY LIGHT , WHITE.
EX	EX: EMERGENCY LED EXIT LIGHT, WHITE.
L1	L1: RECESSED DOWNLIGHT, WHITE.
L2	L2: RECESSED DOWNLIGHT, WHITE.
L3	L3: RECESSED DOWNLIGHT, WHITE.
L4	L4: RECESSED DOWNLIGHT, WHITE.
L5	L5: 1200 x 300 PANEL LIGHT C/W SURFACE MOUNTING KIT, WHITE.
L6	L6: RECESSED DOWNLIGHT, WHITE.

EQUIPMENT:

TEST - TEST PUSH BUTTON MOUNTED ON THE DISTRIBUTION BOARD ESCUTCHEON.  
RESET - RESET PUSH BUTTON MOUNTED ON THE DISTRIBUTION BOARD ESCUTCHEON.  
LAMP - AMBER TEST INDICATING LAMP MOUNTED ON THE DISTRIBUTION BOARD ESCUTCHEON.  
Ta - ADJUSTABLE 0-3 HOUR TIMED RELAY.  
Tb - 15 MINUTE RUN-ON TIMER TO OPERATE UPON THE RETURN OF MAINS POWER.  
Cx - CONTACTOR x.  
CRx - CONTROL RELAY x.  
Rx - RELAY x.



SCHEMATIC  
RJ45 PINOUT CONFIGURATION  
NOT TO SCALE

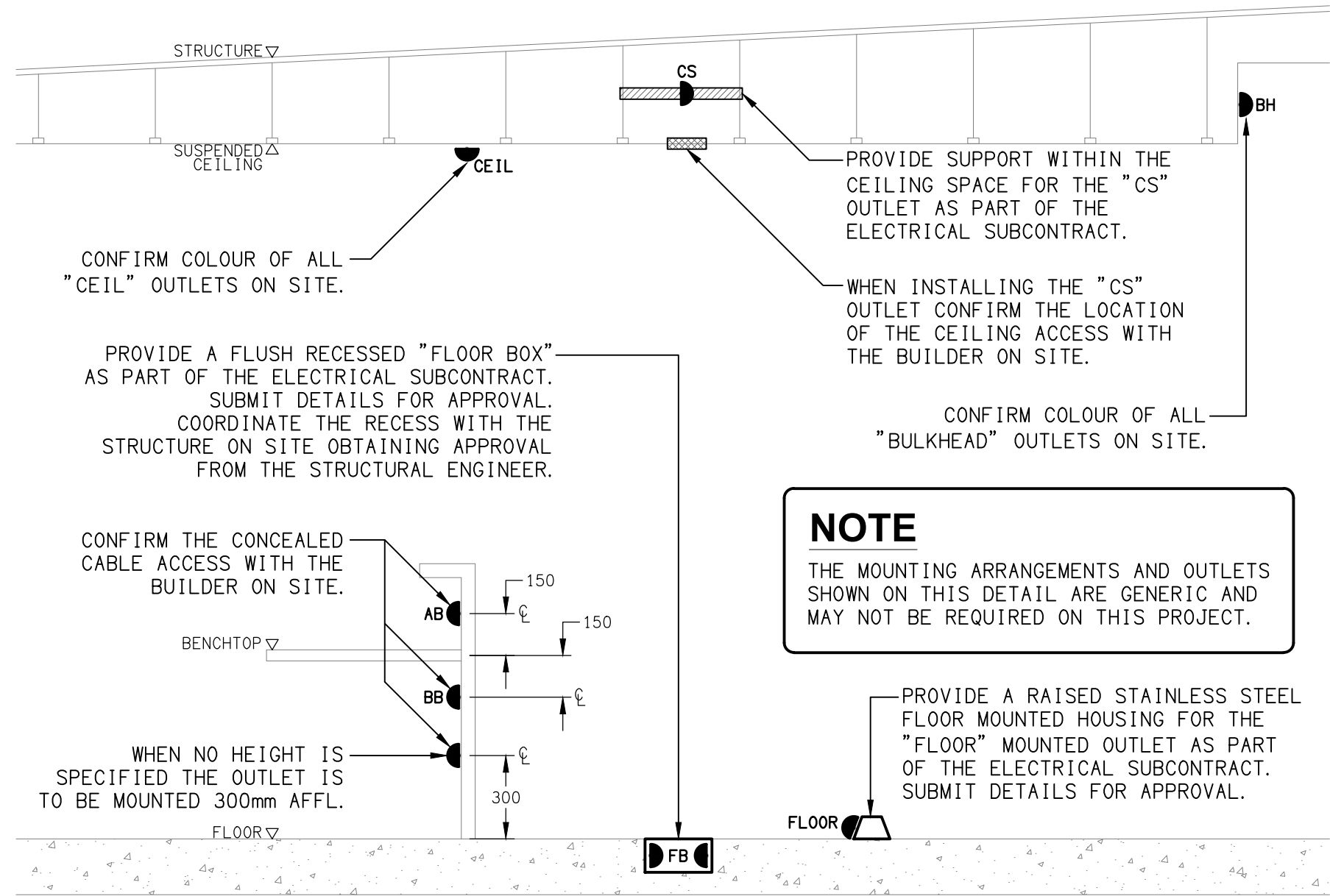


NOTES

- THE EMERGENCY LIGHT UNSWITCHED ACTIVE / GENERAL LIGHTING SWITCHED ACTIVE CIRCUIT ARRANGEMENT AND CONTROL IS TYPICAL FOR ALL CIRCUITS SUPPLYING EMERGENCY LIGHTS.
- PROVIDE ADDITIONAL CONTROL RELAYS (CRx) CONFIGURED AS PER CRa AND CRb FOR ALL ADDITIONAL LIGHTING CIRCUITS THAT SUPPLY LIGHTS IN THE VICINITY OF THE EMERGENCY LIGHTS.

SCHEMATIC

EMERGENCY LIGHTING  
NOT TO SCALE



DETAIL

TYPICAL OUTLET MOUNTINGS  
NOT TO SCALE

ELECTRICAL DESIGN GROUP BRISBANE PTY LTD ACN 092 710 793  TRADING AS: ELECTRICAL DESIGN GROUP	THE COPYRIGHT OF THIS DRAWING REMAINS THE PROPERTY OF THE ELECTRICAL DESIGN GROUP.  USE FIGURED DIMENSIONS IN PREFERENCE TO SCALE.  ALL DIMENSIONS TO BE VERIFIED ONSITE.	<b>ELECTRICAL DESIGN GROUP</b> ELECTRICAL BUILDING SERVICES CONSULTANTS BRISBANE GOLD COAST  P.O.Box 15, Sherwood Q.4075 Phone: (07) 3278 4375 Email: brisbane@edg.net.au Web: www.edg.net.au	PROJECT: <b>EAGERS BYD CAPALABA</b>  104 REDLAND BAY ROAD, CAPALABA, QUEENSLAND	B TENDER 06/02/2026	
				REV: DESCRIPTION: DATE:	DRAWING: <b>ELECTRICAL SERVICES LEGEND &amp; DETAILS</b>  SCALE: NOT TO SCALE AT A1 PROJECT NO: <b>C3665a</b> DRAWING NO: <b>E01</b> REVISION: <b>B</b>